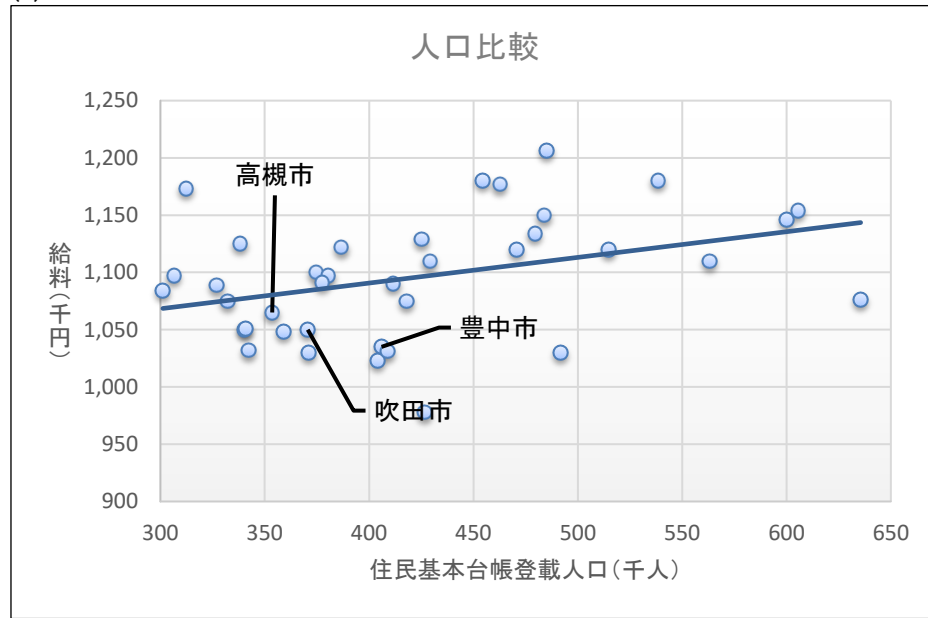
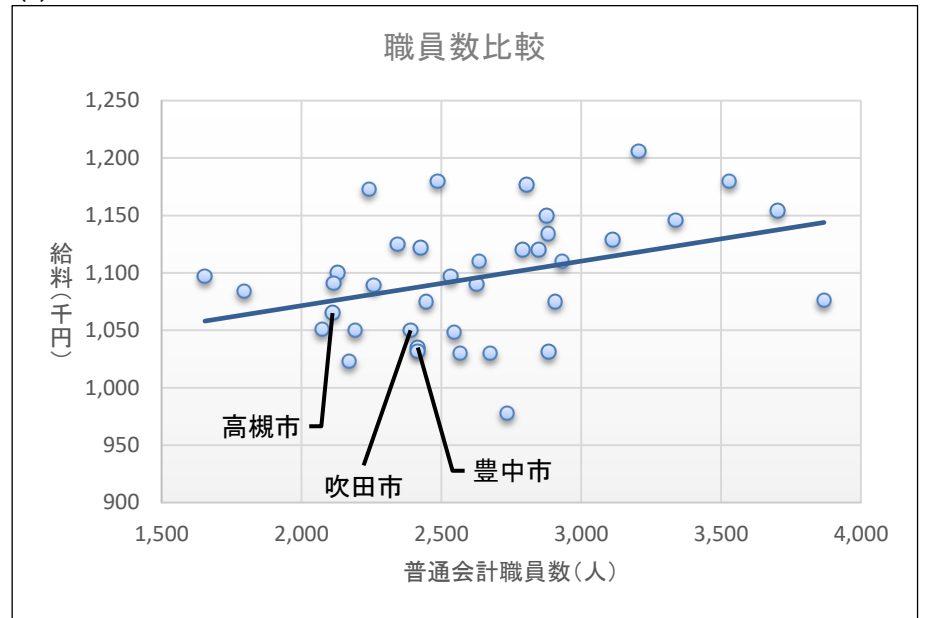


類似都市(人口30万人以上の中核市)における特別職の給料と各自治体の人口等の比較(市長)

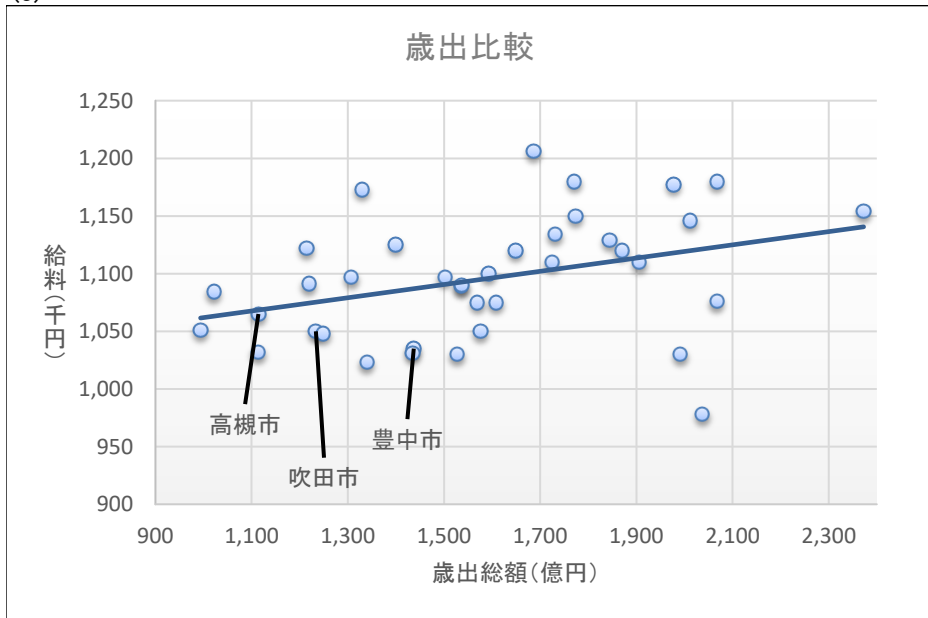
(1)



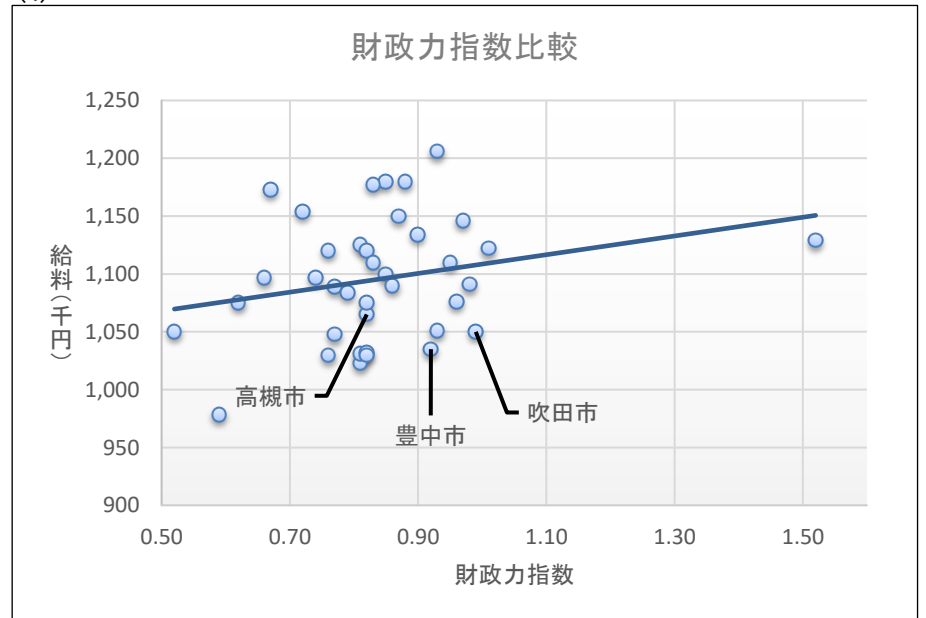
(2)



(3)

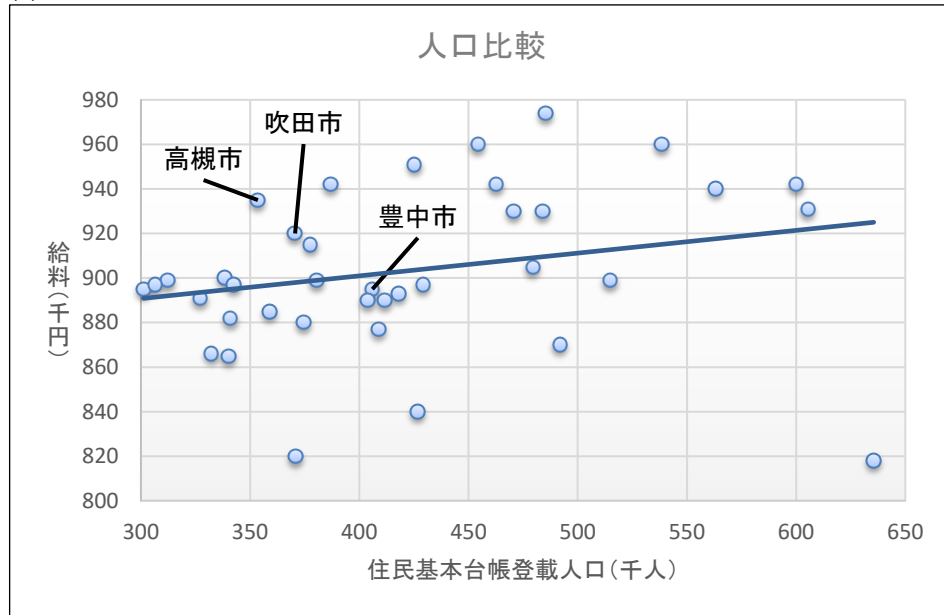


(4)

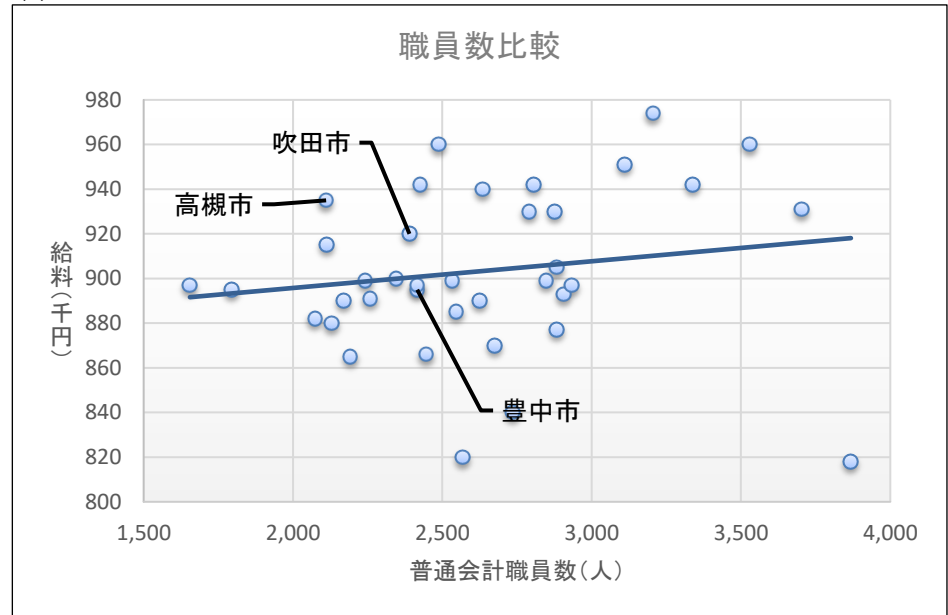


類似都市(人口30万人以上の中核市)における特別職の給料と各自治体の人口等の比較(副市長)

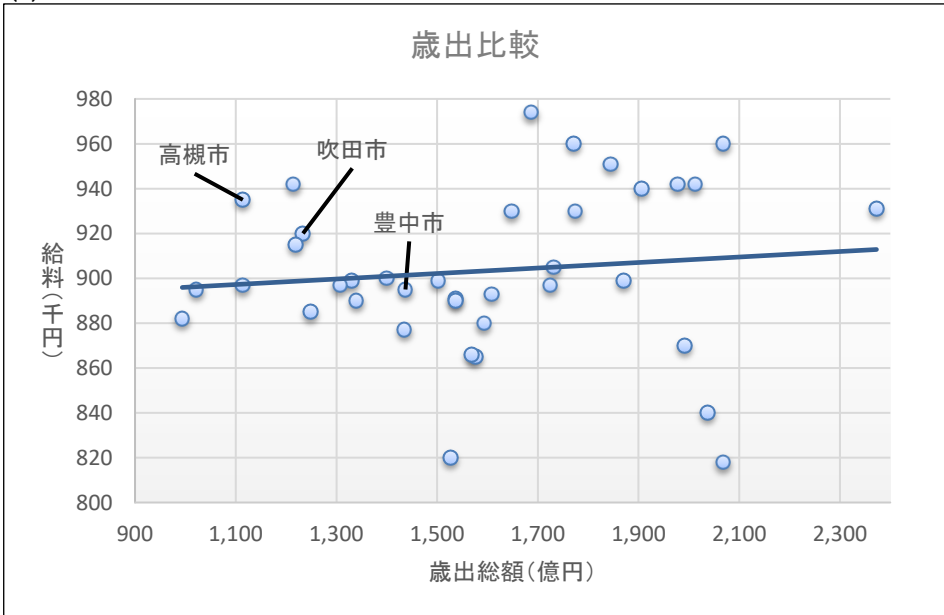
(1)



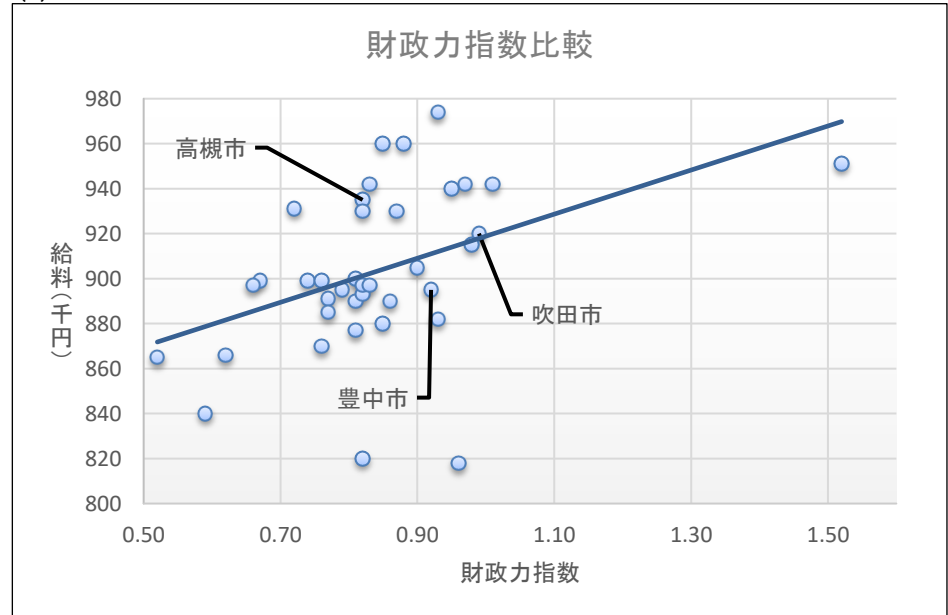
(2)



(3)

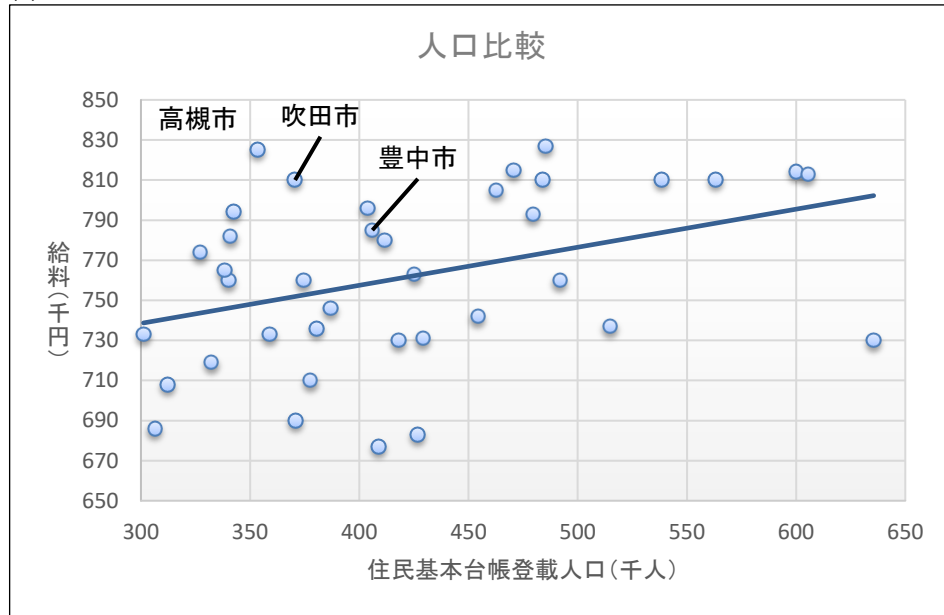


(4)

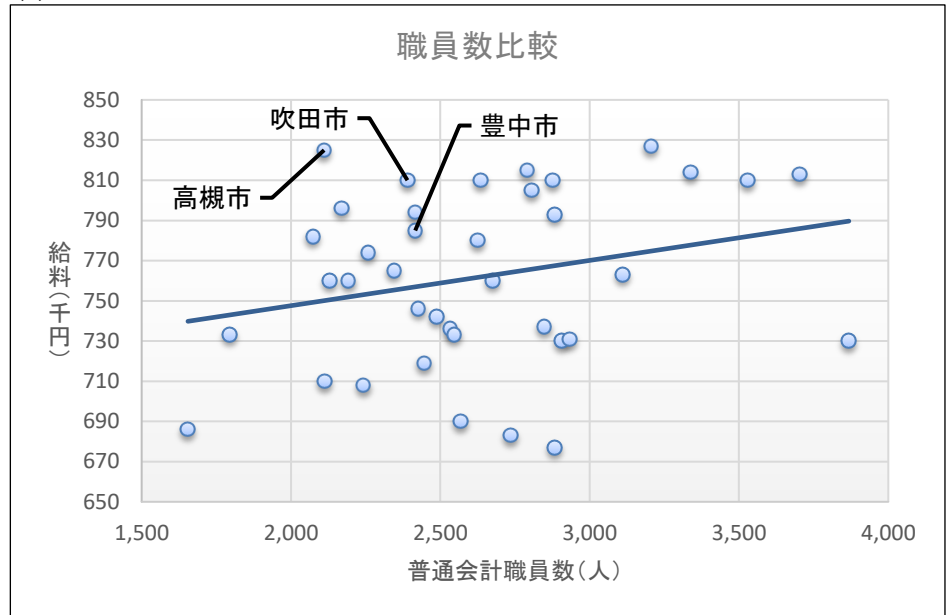


類似都市(人口30万人以上の中核市)における特別職の給料と各自治体の人口等の比較(教育長)

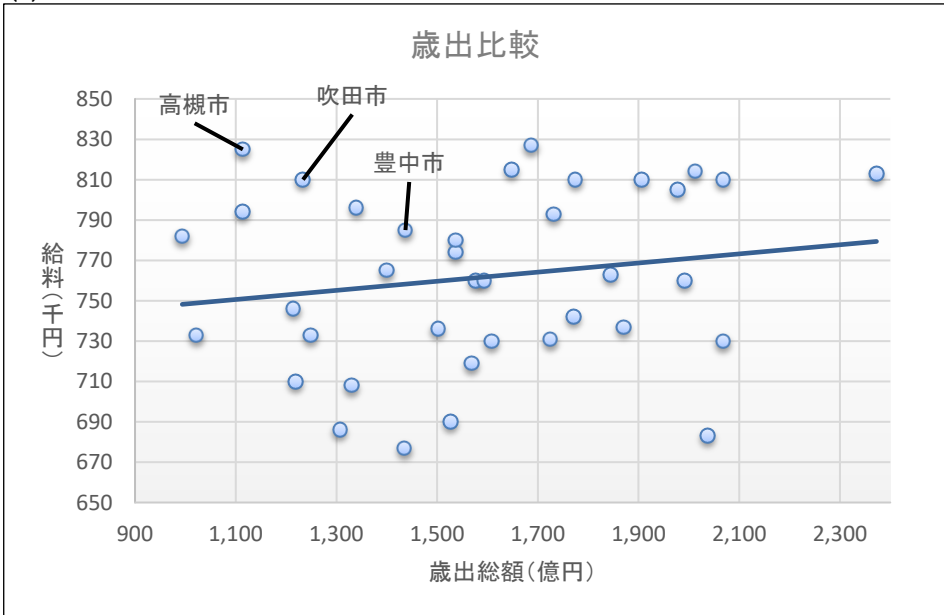
(1)



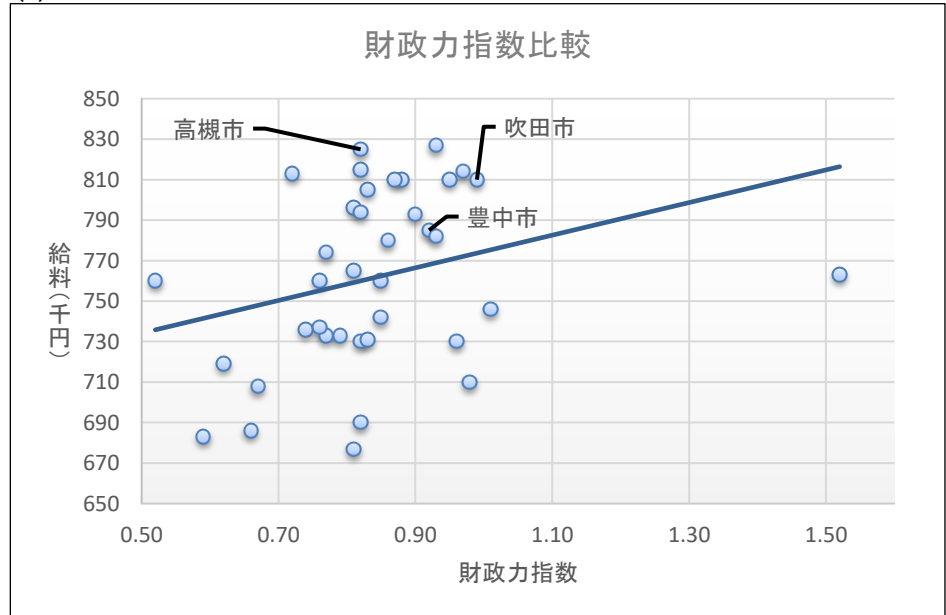
(2)



(3)

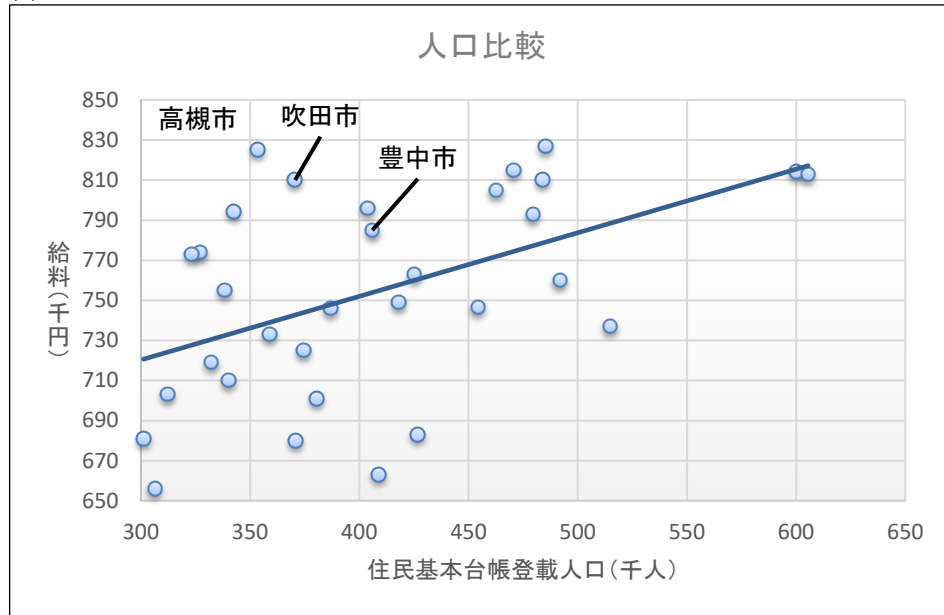


(4)

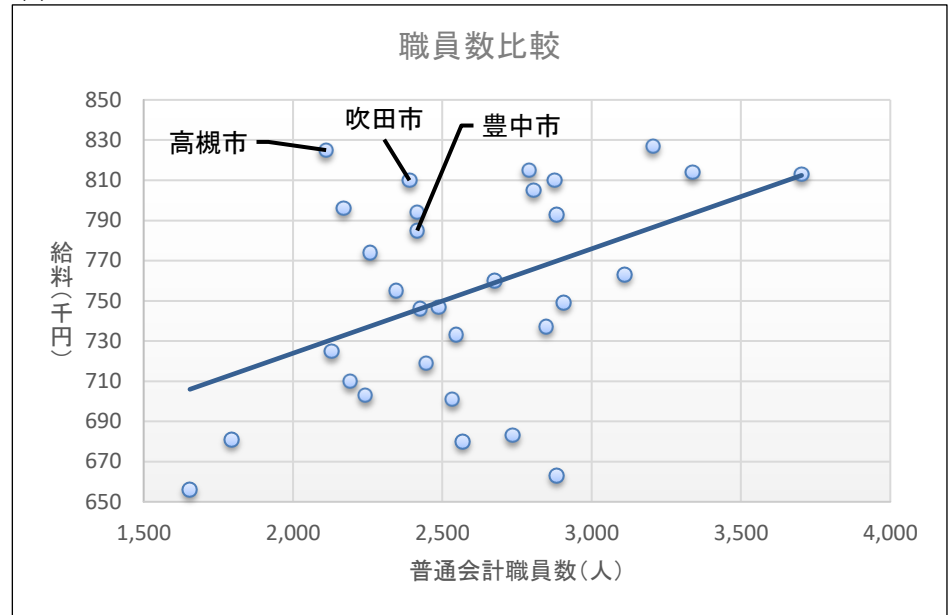


類似都市(人口30万人以上の中核市)における特別職の給料と各自治体の人口等の比較(水道事業管理者)

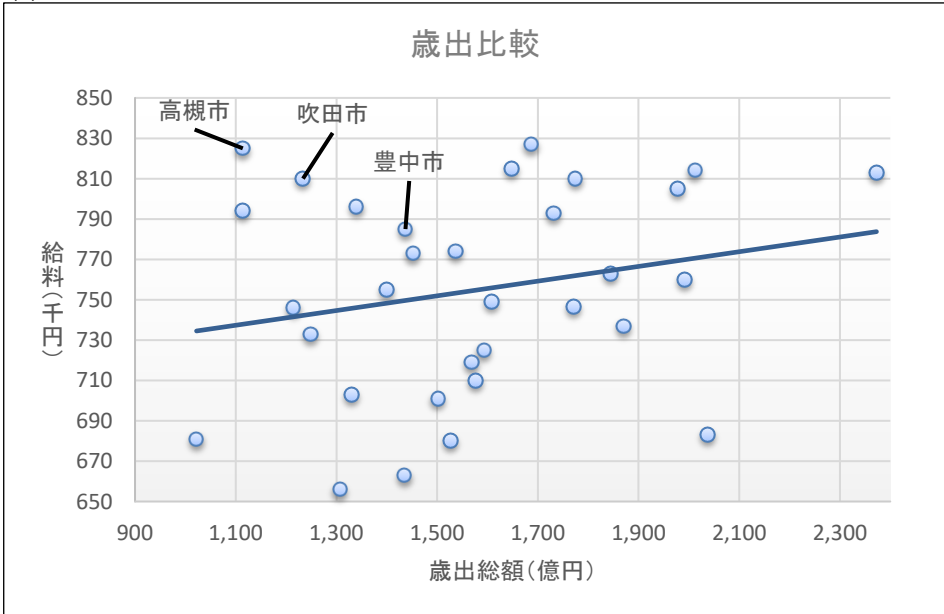
(1)



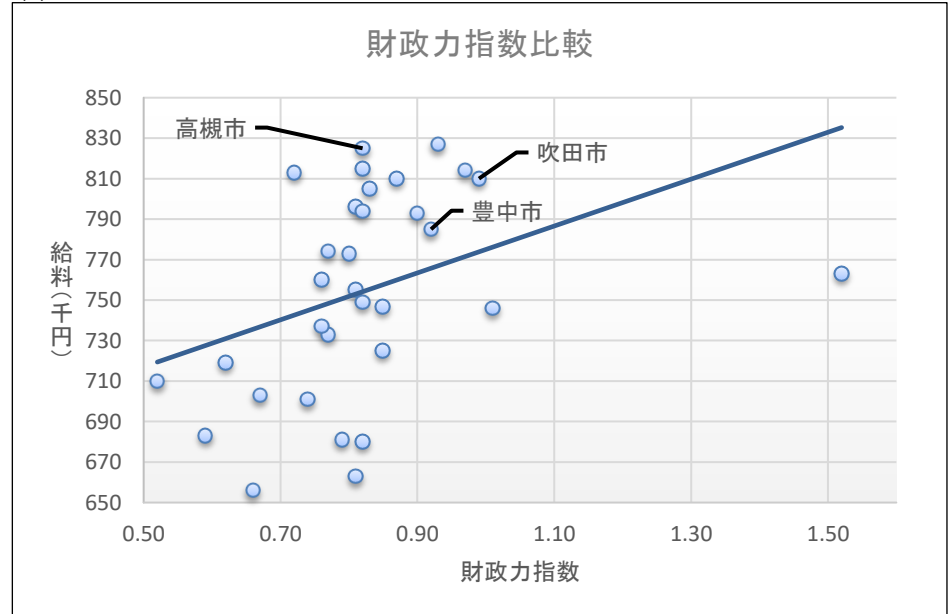
(2)



(3)



(4)



類似都市(人口30万人以上の中核市)における特別職の給料と各自治体の人口等の比較(常勤監査委員)

