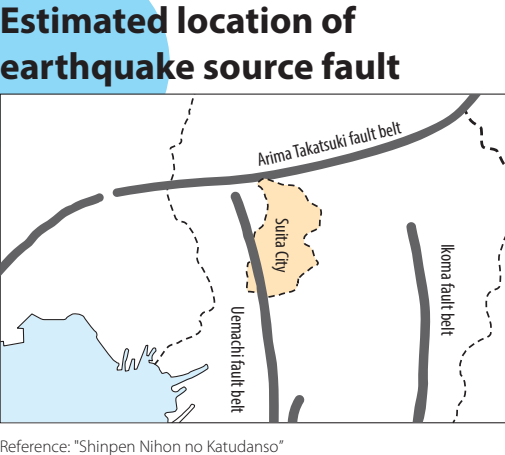
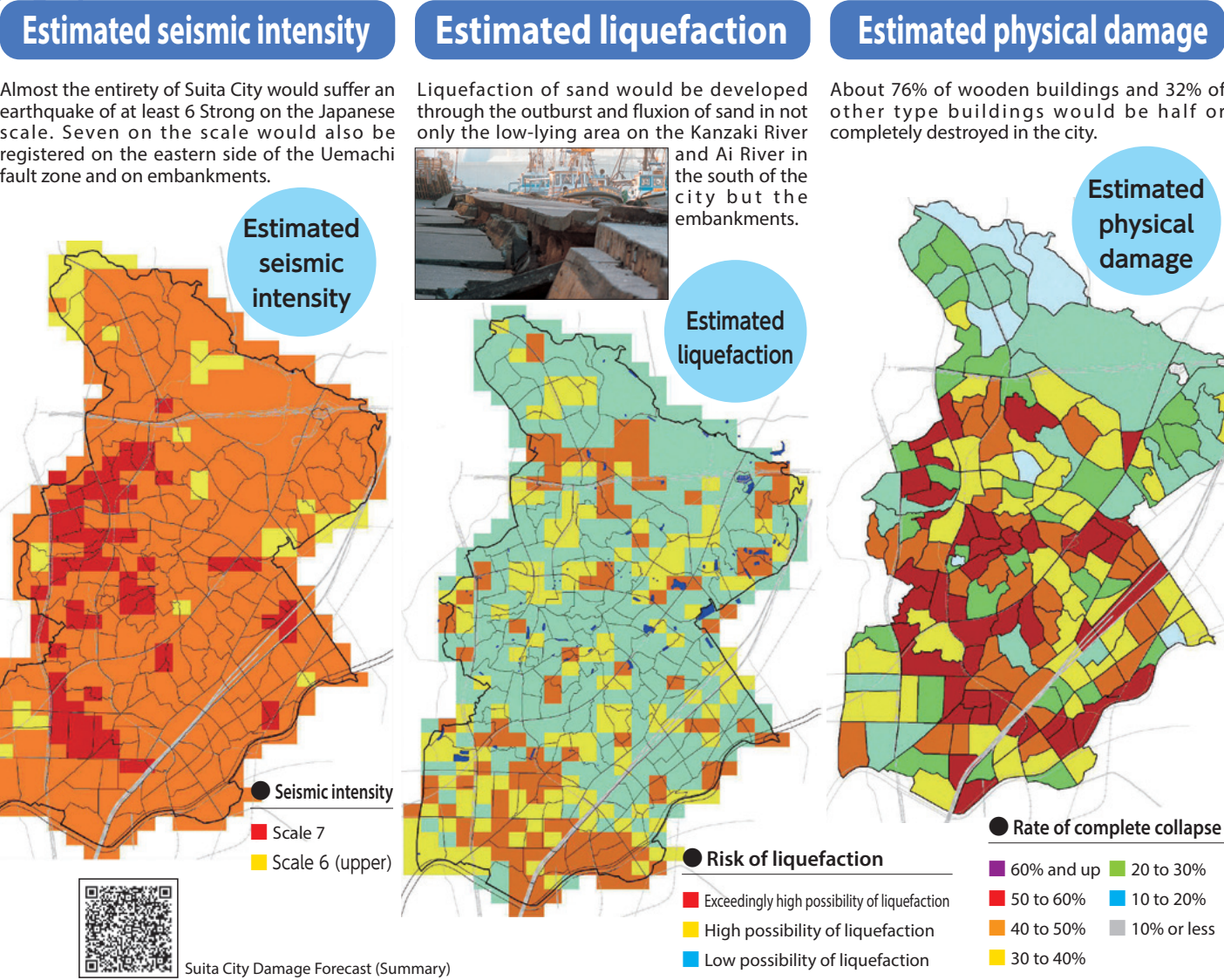


There are no safe places in Japan that do not experience earthquakes

What if the Uemachi fault belt became active and a Great Hanshin Earthquake-level struck Suita City?



Estimated casualties

People killed		People injured	
Number	Population ratio	Number	Population ratio
1,364	0.4%	4,628	1.3%

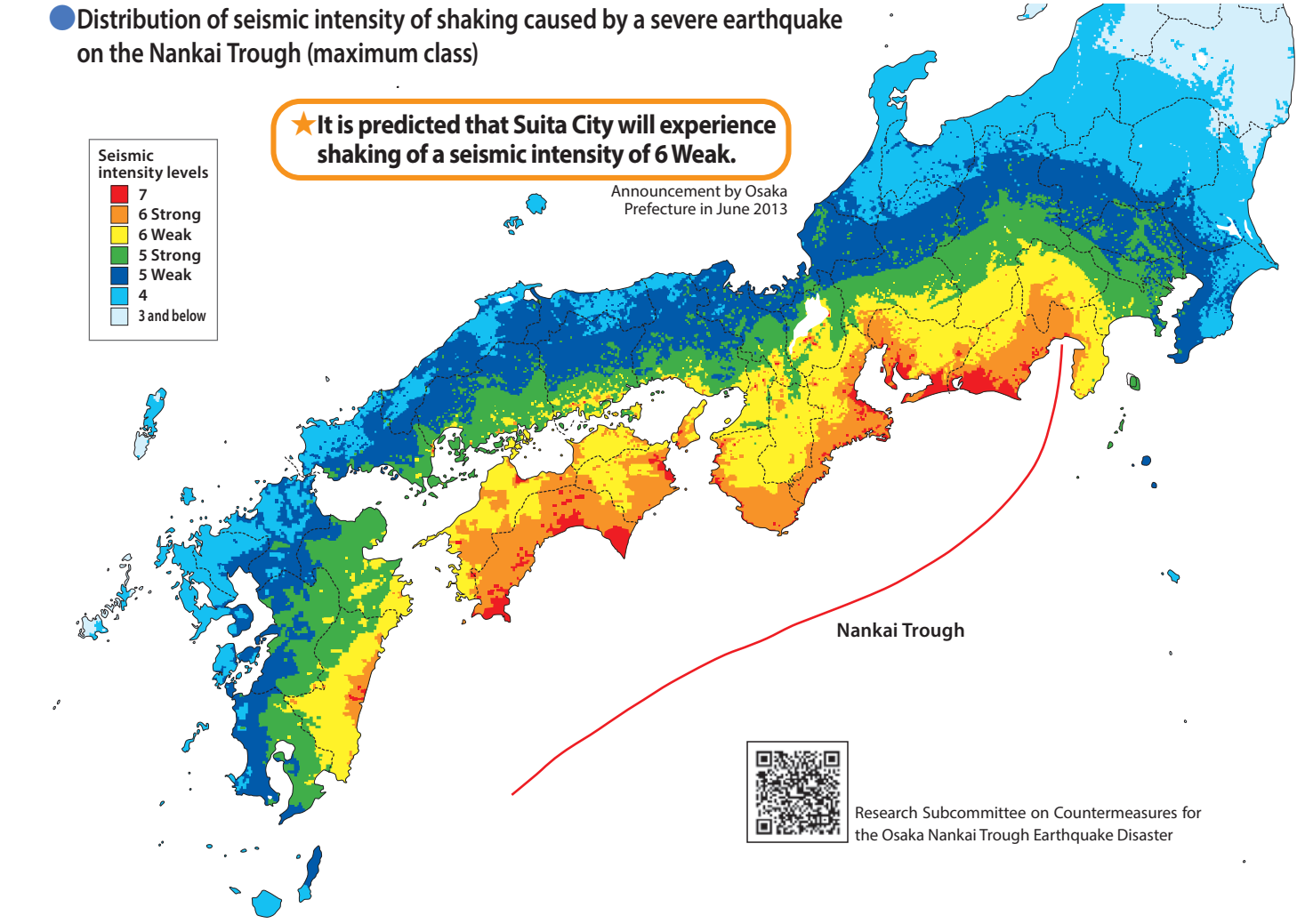
Estimated evacuees

Affected persons		Evacuation life	
Number	Population ratio	Number	Population ratio
179,779	50.4%	52,134	14.6%

●Temporary evacuation" denotes those who temporarily evacuate for the prevention of secondary disaster.

If a Nankai Trough earthquake (also called a Nankai megathrust earthquake) were to occur, it is predicted that great damage would be caused by the powerful tremors and resulting tsunamis. After suffering from the Great East Japan Earthquake, the country has organized new predictions for the severe earthquakes that are expected to occur on the Nankai Trough. It predicts that there is the possibility that 687 cities, towns and villages in 24 prefectures will experience shaking of a seismic intensity of 6 Weak or greater on the Japan Meteorological Agency seismic intensity scale. There is a possibility that Suita City will suffer shaking of a seismic intensity of 6 Weak.

To strengthen disaster preparedness, areas are placed into two categories. Areas predicted to suffer heavy damage due to a Tokai earthquake are designated as "Earthquake Disaster Preventative Countermeasures Improvement Areas," and areas predicted to suffer heavy damage due to a Nankai Trough earthquake are designated as "Earthquake Disaster Preventative Countermeasures Promotion Areas." Suita City is in the latter category, i.e. it is an "Earthquake Disaster Preventative Countermeasures Promotion Area" and expected to suffer heavy damage from a Nankai Trough earthquake.



"Earthquake Disaster Preventative Countermeasures Promotion Areas" for a Nankai Trough earthquake

In principle, these are areas that are predicted to experience one of the damage types listed below in the event of a Nankai Trough earthquake. Suita City is in category 1.

1 Areas of Seismic Intensities of Six-Weak and Above (Conspicuous Damage Caused by Earthquake Shaking)

2 Areas predicted to experience a "large tsunami" (more than 3 meters tall) but do not have coastal embankments taller than 3 meters.

*Areas expected to have large amounts of jetsam: Important Harbors and Designated Important Ports and Harbors

