

Food



OPEN 17:00~
L.O. food 23:00 drink 23:30
CLOSE Sundays but open on GANBA's games
 ☎ 0663198345



1 Naruo Beer



OPEN 17:00~
L.O. 24:00 on weekdays
CLOSE open 360 days but New Year Days and OBON
 ☎ 0663834560



2 2525 Dining Happy



OPEN 17:00~
L.O. 23:00
CLOSE Sundays
 ☎ 0663823737



3 福 warai (Japanese sake)



OPEN 17:00~
L.O. 21:30
CLOSE Sundays & holidays
 ☎ 09061074539



4 Izakaya FURUSATO

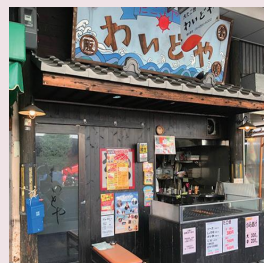
We deliver your lunch-boxes. (弁当配達します)



OPEN Mon 18:00~ from Tue to Sat 11:00~17:00 & 18:00~
CLOSE Sundays & daytime on Mon
 ☎ 0661709123



5 Gallery&Cafebar ケセラ



OPEN 14:00~
L.O. 22:30
CLOSE Thursdays
 ☎ 0648605000



6 TAKOYAKI and others Waido-ya Suita



OPEN 18:30~
L.O. Fri & Sat 2:00 from Tue to Thu & Sun 24:00
CLOSE Mondays
 ☎ 0663171117



7 wine bar RYTHME



OPEN lunch 11:30~ dinner 18:00~
L.O. lunch 14:00 dinner 23:00
CLOSE Thursdays
 ☎ 0663821151



8 Sushi and SAKE Sushi Konishi

Activities



9 高浜神社



You can come here by passing through Asahi-dori Shopping Arcade.



10 浜屋敷



There are many good places to take pictures.



11 旧西尾家住宅



Local volunteers explain this cultural heritage to you.

You can experience at the store

We offer various cultural experiences, but advance booking is necessary.

Tea ceremony

fee 5,000yen (about 2 hours)
 mini 5 people



Building a watch

fee 5,000yen (about 2 hours)
 mini 5 people

KIMONO experience

fee 7,500yen (about 3 hours)
 mini 2 people

More information to...
<http://suita-asahidori.com/>