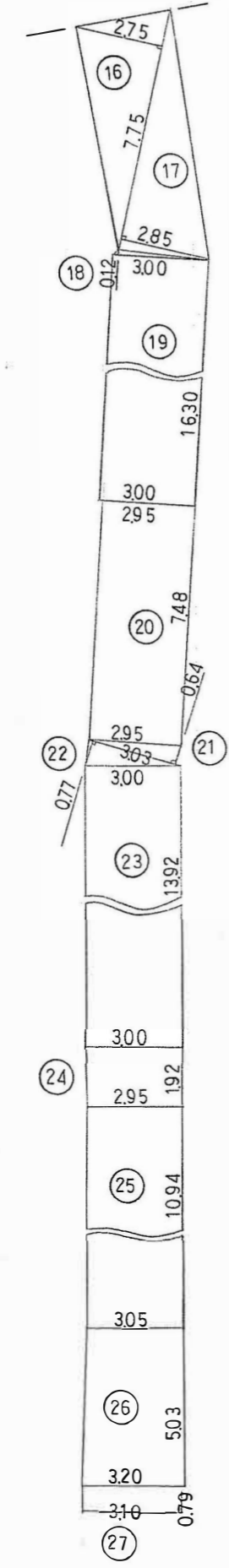
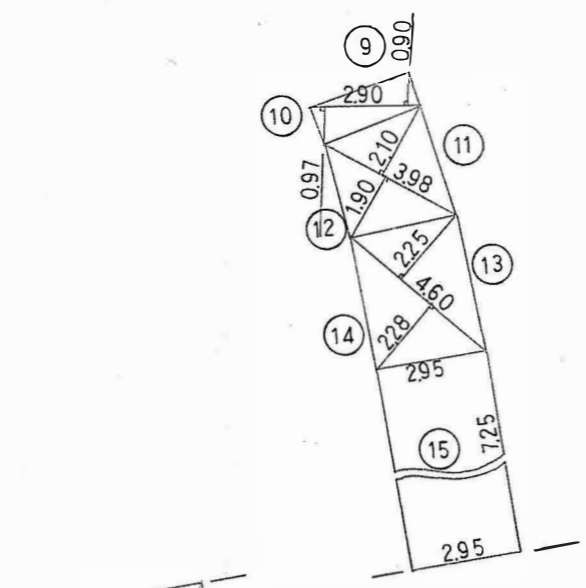
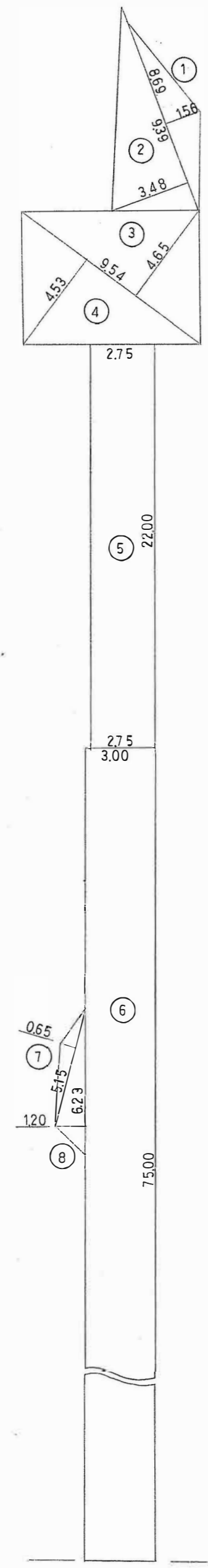


アスファルト舗装出来形 1:200



- ① 8.69×1.56 = 13.55
- ② 9.39×3.48 = 32.67
- ③ 9.54×4.65 = 44.36
- ④ 9.54×4.53 = 43.21
- ⑤ 22.00×2.75×2 = 121.00
- ⑥ 75.00×3.00×2 = 450.00
- ⑦ 5.15×0.65 = 3.34
- ⑧ 6.23×1.20 = 7.47
- ⑨ 2.90×0.90 = 2.61
- ⑩ 2.90×0.97 = 2.81
- ⑪ 3.98×2.10 = 8.35
- ⑫ 3.98×1.90 = 7.56
- ⑬ 4.60×2.25 = 10.35
- ⑭ 4.60×2.28 = 10.48
- ⑮ 7.25×2.95×2 = 42.77
- ⑯ 7.75×2.75 = 21.31
- ⑰ 7.75×2.85 = 22.08
- ⑱ 3.00×0.12 = 0.36
- ⑲ 16.30×3.00×2 = 97.80
- ⑳ 7.48×2.95×2 = 44.13
- ㉑ 3.03×0.64 = 1.93
- ㉒ 3.03×0.77 = 2.33
- ㉓ 13.92×3.00×2 = 83.52
- ㉔ (3.00+2.95)×1.92 = 11.42
- ㉕ (2.95+3.05)×10.94 = 65.64
- ㉖ (3.05+3.20)×5.03 = 31.43
- ㉗ 0.79×3.10×2 = 4.89

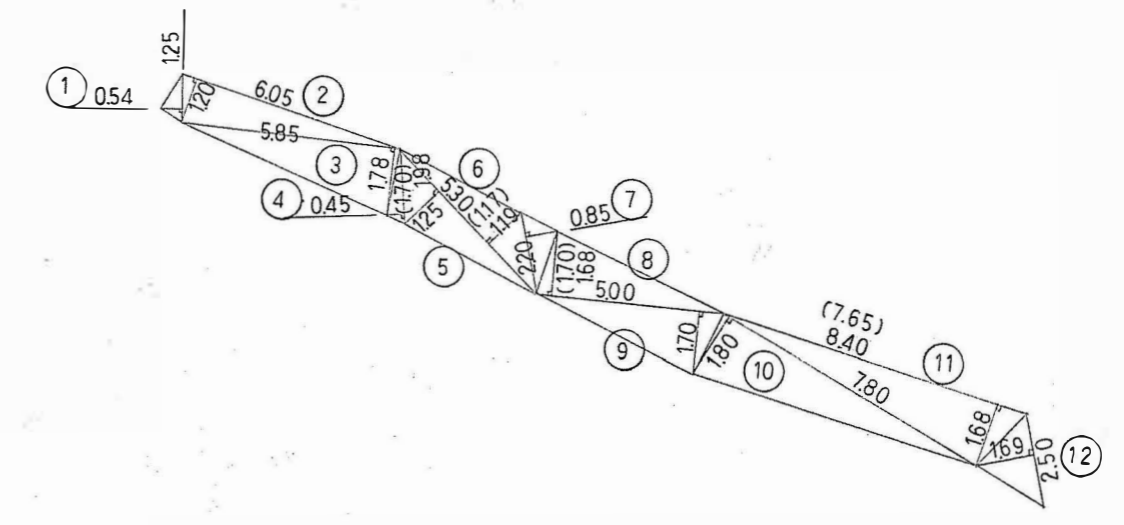
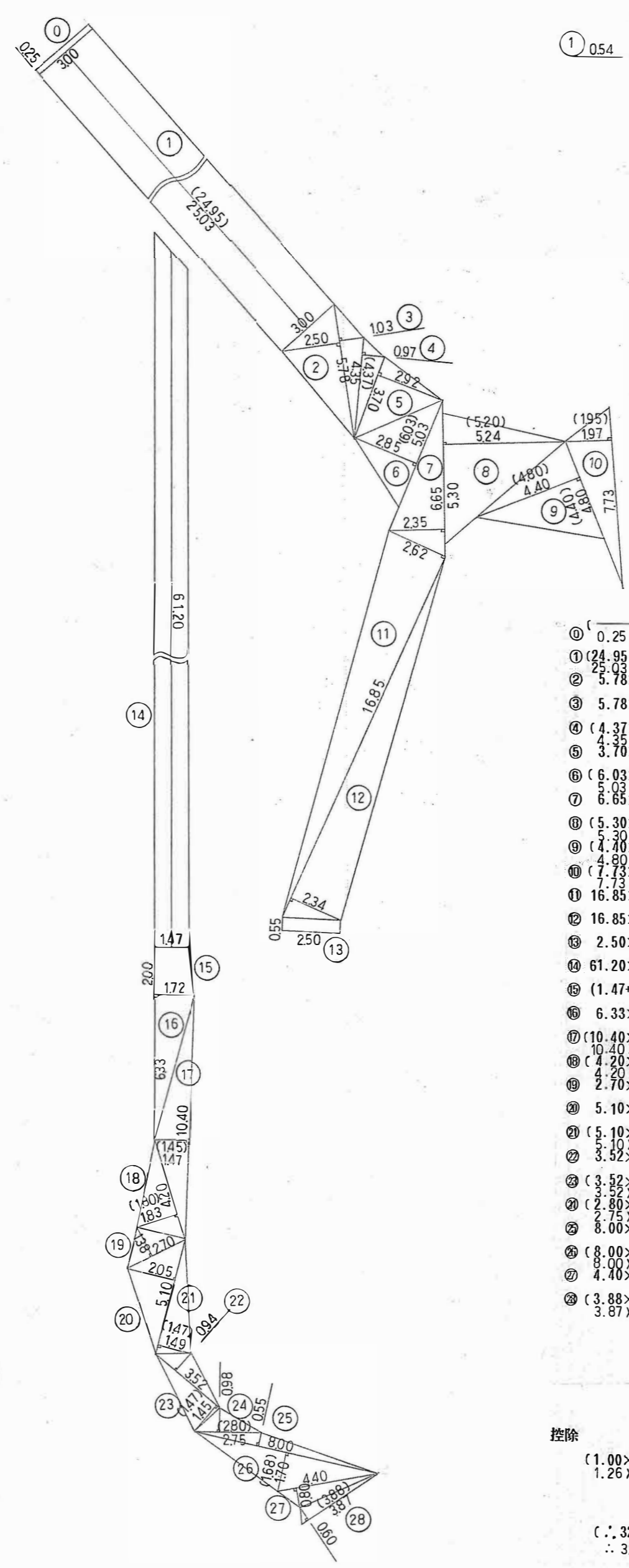
TOTAL 1187.37
1/2 593.68

- 控除
- 0.52×0.52×3.14×1/4 ×2 = 0.42
 - 0.80×0.80×3.14×1/4 = 0.50
 - 0.76×0.76×3.14×1/4 ×2 = 0.91
 - 0.60×0.075 ×2 = 0.09

TOTAL 1.92

∴ 593.68 - 1.92 = 591.76㎡

真砂土舗装出来形 1:200



- ① 0.25×3.00×2 = 1.50
- ① (24.95×3.00×2) = 149.70
- ② (5.03×3.00×2) = 30.18
- ③ 5.78×2.50×2 = 14.45
- ④ 5.78×1.03 = 5.95
- ⑤ (4.37×0.97) = 4.23
- ⑥ 4.35×0.97 = 4.21
- ⑦ 3.70×2.92 = 10.80
- ⑧ (6.03×2.85) = 17.18
- ⑨ (5.03×2.85) = 14.33
- ⑩ 6.65×2.35 = 15.62
- ⑪ (5.30×5.20) = 27.56
- ⑫ (5.70×3.86) = 21.77
- ⑬ (4.80×4.40) = 21.12
- ⑭ (7.73×1.95) = 15.07
- ⑮ (7.73×1.97) = 15.22
- ⑯ 16.85×2.62 = 44.14
- ⑰ 16.85×2.34 = 39.42
- ⑱ 2.50×0.55×2 = 2.75
- ⑲ 61.20×1.47×2 = 179.92
- ㉑ (1.47+1.72)×2.00 = 6.38
- ㉒ 6.33×1.72 = 10.88
- ㉓ (10.40×1.45) = 15.08
- ㉔ 10.40×1.47 = 15.28
- ㉕ (4.20×1.80) = 7.56
- ㉖ (4.20×1.83) = 7.69
- ㉗ 2.70×1.38 = 3.72
- ㉘ 5.10×2.05 = 10.45
- ㉙ (5.10×1.47) = 7.49
- ㉚ 5.10×1.49 = 7.59
- ㉛ 3.52×0.94 = 3.30
- ㉜ (3.52×1.47) = 5.17
- ㉝ 3.52×1.45 = 5.10
- ㉞ (2.80×0.98) = 2.74
- ㉟ 2.75×0.98 = 2.69
- ㊱ 8.00×0.55 = 4.40
- ㊲ (8.00×1.68) = 13.44
- ㊳ 8.00×1.70 = 13.60
- ㊴ 4.40×0.80 = 3.52
- ㊵ (3.88×0.60) = 2.32
- ㊶ 3.87×0.60 = 2.32

TOTAL (644.36)
1/2 (322.18)
322.14

- 控除
- (1.00×0.50) = 0.50
 - 1.26×0.24 = 0.30

∴ 322.18 - 0.50 = 321.68㎡
∴ 322.14 - 0.30 = 321.84㎡

- ① 1.25×0.54 = 0.67
- ② 6.05×1.20 = 7.26
- ③ 5.85×1.78 = 10.41
- ④ (1.70×0.45) = 0.76
- ⑤ 1.98×0.45 = 0.89
- ⑥ 5.30×1.25 = 6.62
- ⑦ (5.30×1.17) = 6.20
- ⑧ 5.30×1.15 = 6.20
- ⑨ 2.20×0.85 = 1.87
- ⑩ (5.00×1.70) = 8.50
- ⑪ 5.00×1.68 = 8.40
- ⑫ 5.00×1.70 = 8.50
- ⑬ 7.80×1.80 = 14.04
- ⑭ (7.65×1.68) = 12.85
- ⑮ 8.40×1.65 = 13.86
- ⑯ 2.50×1.69 = 4.22

TOTAL (81.90)
1/2 (40.95) ㎡

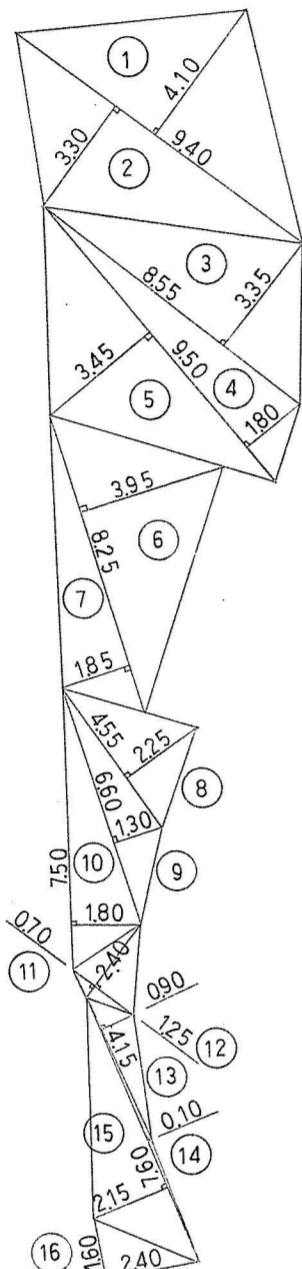
(182.87 + 321.68 + 40.95 = 545.50)
182.45 + 321.84 + 41.52 = 545.81

∴ 545.81 - 545.50 = 0.31 ㎡

年度	元	図面番号
工事名	出来形図	
図面名称	(アスファルト、真砂土舗装)	
縮尺	1:200	
吹田市緑化公園事務所建設課		

張芝出来形 1:200

真砂土舗装出来形 1:200



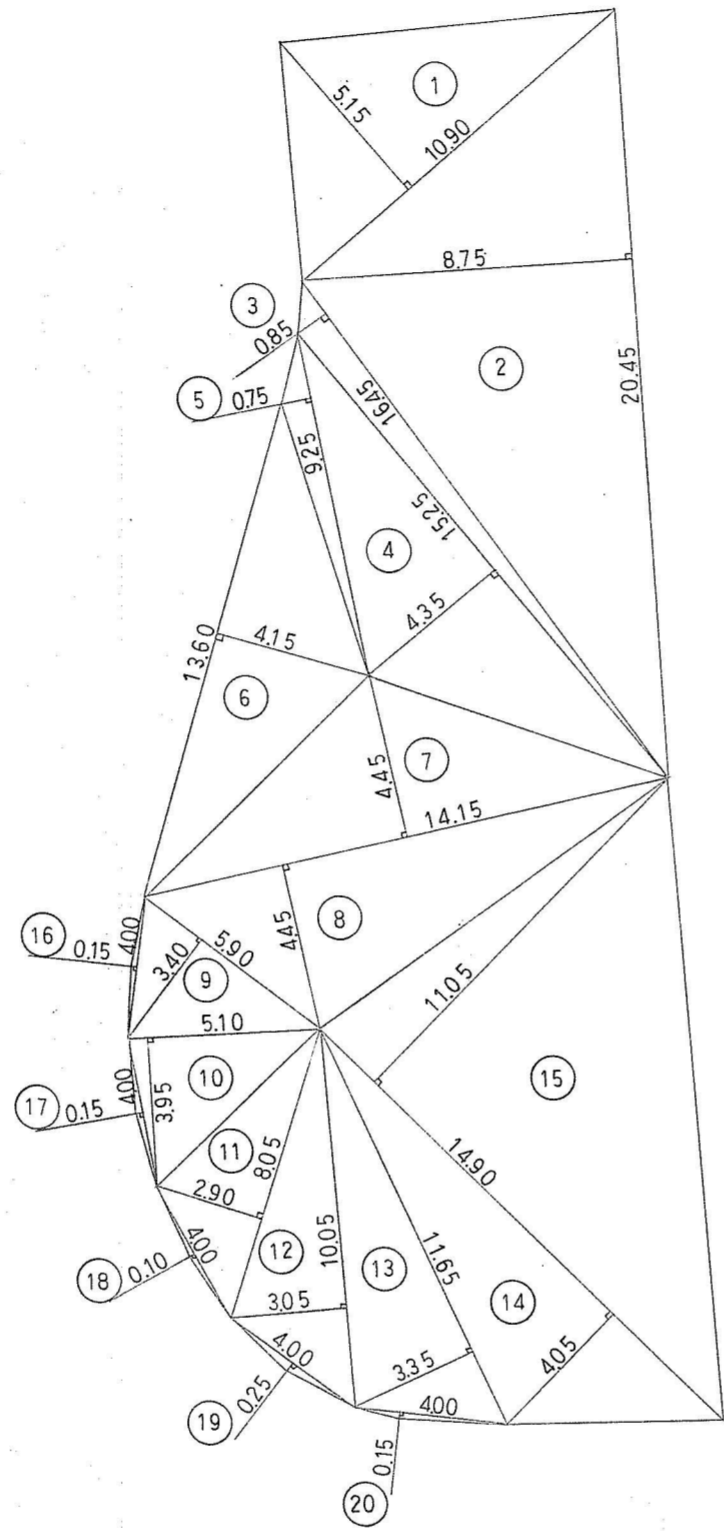
- ① 9.40 x 4.10 = 38.54
- ② 9.40 x 3.30 = 31.02
- ③ 8.55 x 3.35 = 28.64
- ④ 9.50 x 1.80 = 17.10
- ⑤ 9.50 x 3.45 = 32.77
- ⑥ 8.25 x 3.95 = 32.58
- ⑦ 8.25 x 1.85 = 15.26
- ⑧ 4.55 x 2.25 = 10.23
- ⑨ 6.60 x 1.30 = 8.58
- ⑩ 7.50 x 1.80 = 13.50
- ⑪ 2.40 x 0.70 = 1.68
- ⑫ 2.40 x 1.25 = 3.00
- ⑬ 4.15 x 0.90 = 3.73
- ⑭ 7.60 x 0.10 = 0.76
- ⑮ 7.60 x 2.15 = 16.34
- ⑯ 2.40 x 1.60 = 3.84
- ⑰ 1.90 x 0.40 x 2 = 1.52
- ⑱ 1.60 x 0.40 = 0.64
- ⑲ 2.20 x 1.45 = 3.19
- ⑳ 2.85 x 0.85 = 2.42
- ㉑ 3.40 x 1.40 = 4.76
- ㉒ 3.40 x 0.55 = 1.87
- ㉓ 3.05 x 1.10 = 3.35

TOTAL 275.32
1/2 137.66

控除

- 1.00 x 3.14 x 1/4 x 2 = 1.57
 - 1.10 x 3.14 x 1/4 = 0.95
 - 1.03 x 3.14 x 1/4 = 0.83
- TOTAL 3.35

∴ 137.66 - 3.35 = 134.31 M²



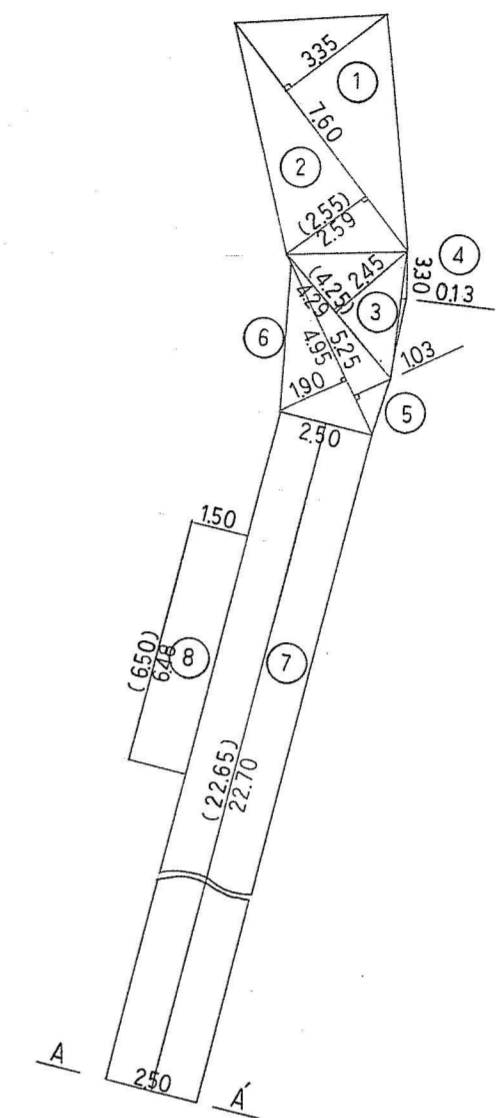
- ① 10.90 x 5.15 = 56.13
- ② 20.45 x 8.75 = 178.93
- ③ 16.45 x 0.85 = 13.98
- ④ 15.25 x 4.35 = 66.33
- ⑤ 9.25 x 0.75 = 6.93
- ⑥ 13.60 x 4.15 = 56.44
- ⑦ 14.15 x 4.45 = 62.96
- ⑧ 14.15 x 4.45 = 62.96
- ⑨ 5.90 x 3.40 = 20.06
- ⑩ 5.10 x 3.95 = 20.14
- ⑪ 8.05 x 2.90 = 23.34
- ⑫ 10.05 x 3.05 = 30.65
- ⑬ 11.65 x 3.35 = 39.02
- ⑭ 14.90 x 4.05 = 60.34
- ⑮ 14.90 x 11.05 = 164.64
- ⑯ 4.00 x 0.15 = 0.60
- ⑰ 4.00 x 0.15 = 0.60
- ⑱ 4.00 x 0.10 = 0.40
- ⑳ 4.00 x 0.25 = 1.00
- ㉑ 4.00 x 0.15 = 0.60

TOTAL 866.05
1/2 433.02

控除

- 0.70 x 0.70 = 0.49
 - 0.75 x 0.66 = 0.49
 - 0.73 x 0.55 = 0.40
- TOTAL 1.38

∴ 433.02 - 1.38 = 431.64 M²



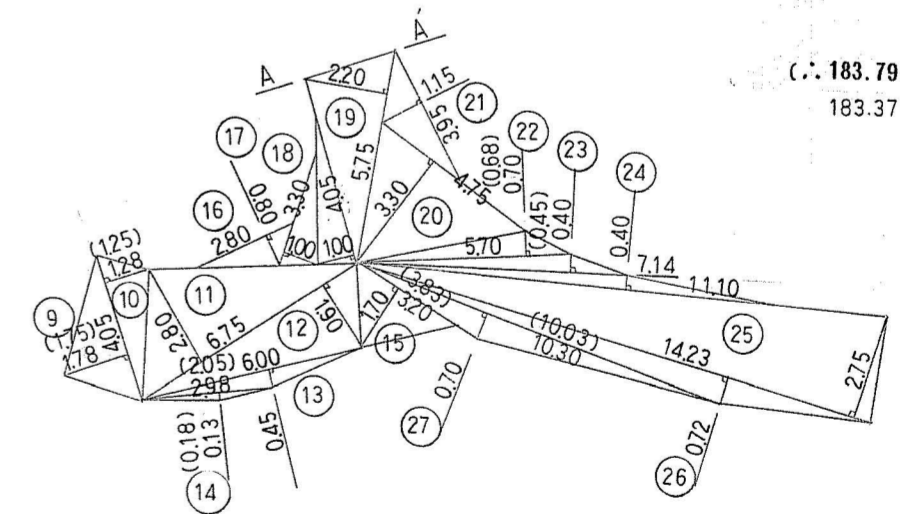
- ① 7.60 x 3.35 = 25.46
- ② (7.60 x 2.55) = 19.38
- ③ (7.60 x 2.55) = 19.38
- ④ (4.25 x 2.45) = 10.41
- ⑤ (4.25 x 2.45) = 10.41
- ⑥ 3.30 x 0.13 = 0.42
- ⑦ 5.25 x 1.03 = 5.40
- ⑧ (5.25 x 1.90) = 9.97
- ⑨ (4.65 x 1.90) = 8.83
- ⑩ (2.50 x 22.65) x 2 = 113.25
- ⑪ (2.50 x 22.70) x 2 = 113.50
- ⑫ (1.50 x 6.48) x 2 = 19.44
- ⑬ (1.50 x 6.48) x 2 = 19.44
- ⑭ (4.05 x 1.75) = 7.08
- ⑮ (4.05 x 1.75) = 7.08
- ⑯ (4.05 x 1.25) = 5.06
- ⑰ (4.05 x 1.25) = 5.06
- ⑱ 6.75 x 2.80 = 18.90
- ⑲ 6.75 x 1.90 = 12.82
- ⑳ 6.00 x 0.45 = 2.70
- ㉑ (2.05 x 0.18) = 0.36
- ㉒ (2.98 x 0.13) = 0.38
- ㉓ (3.83 x 1.70) = 6.51
- ㉔ (3.20 x 1.70) = 5.44
- ㉕ 2.80 x 0.80 = 2.24
- ㉖ 3.30 x 1.00 = 3.30
- ㉗ 4.05 x 1.00 = 4.05
- ㉘ 5.75 x 2.20 = 12.65
- ㉙ 4.75 x 3.30 = 15.67
- ㉚ 3.95 x 1.15 = 4.54
- ㉛ (5.70 x 0.68) = 3.87
- ㉜ (5.70 x 0.70) = 3.99
- ㉝ (7.14 x 0.45) = 3.21
- ㉞ (7.14 x 0.45) = 3.21
- ㉟ 11.10 x 0.40 = 4.44
- ㊱ 14.23 x 2.75 = 39.13
- ㊲ 14.23 x 0.72 = 10.24
- ㊳ (10.03 x 0.70) = 7.02
- ㊴ (10.30 x 0.70) = 7.21

TOTAL (367.58)
366.74
1/2 (183.79)
183.37

控除

- 0.50 x 0.15 x 6 = 0.45
 - 0.74 x 0.64 = 0.47
- TOTAL 0.92

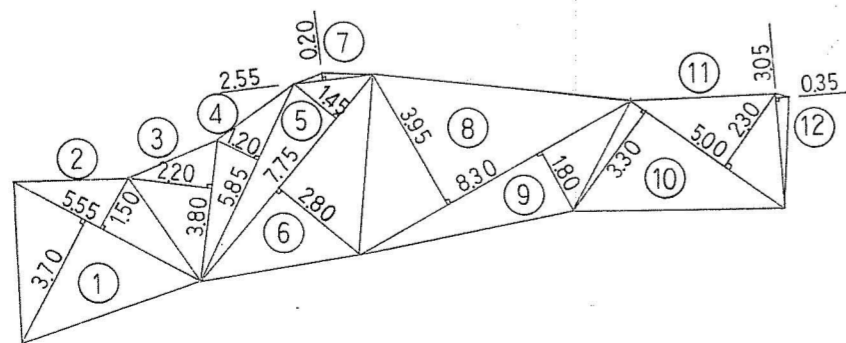
∴ 183.79 - 0.92 = 182.87 m²
183.37 - 0.92 = 182.45 m²



- ① 5.55 x 3.70 = 20.53
- ② 5.55 x 1.50 = 8.32
- ③ 3.80 x 2.20 = 8.36
- ④ 5.85 x 1.20 = 7.02
- ⑤ 7.75 x 1.45 = 11.23
- ⑥ 7.75 x 2.80 = 21.70
- ⑦ 2.55 x 0.20 = 0.51
- ⑧ 8.30 x 3.95 = 32.78
- ⑨ 8.30 x 1.80 = 14.94
- ⑩ 5.00 x 3.30 = 16.50
- ⑪ 5.00 x 2.30 = 11.50
- ⑫ 3.05 x 0.35 = 1.06

TOTAL 154.45
1/2 77.22 M²

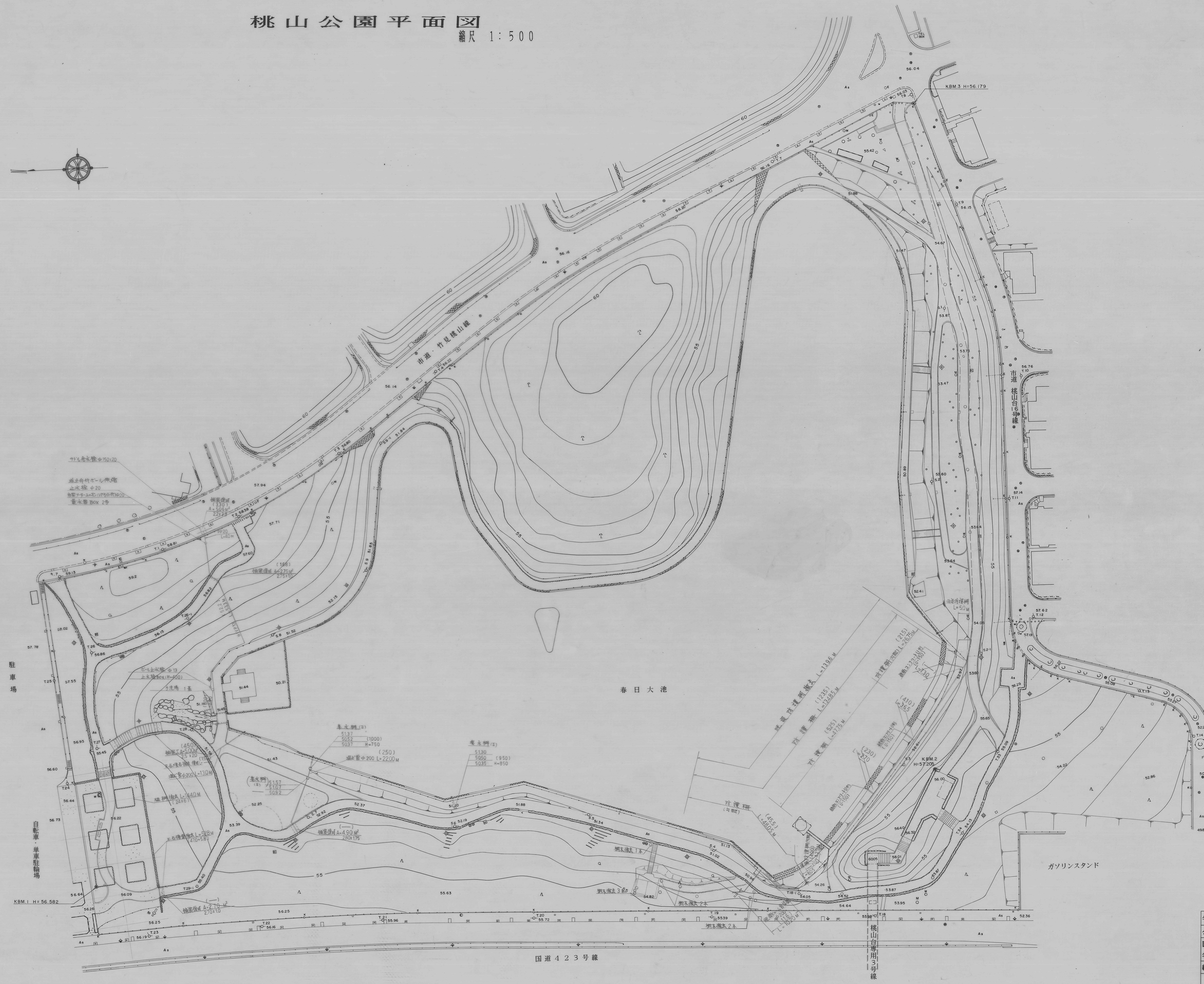
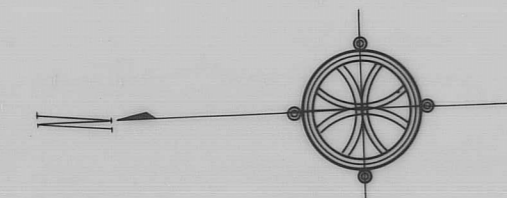
∴ 134.31 + 77.22 + 431.64 = 643.17 M²



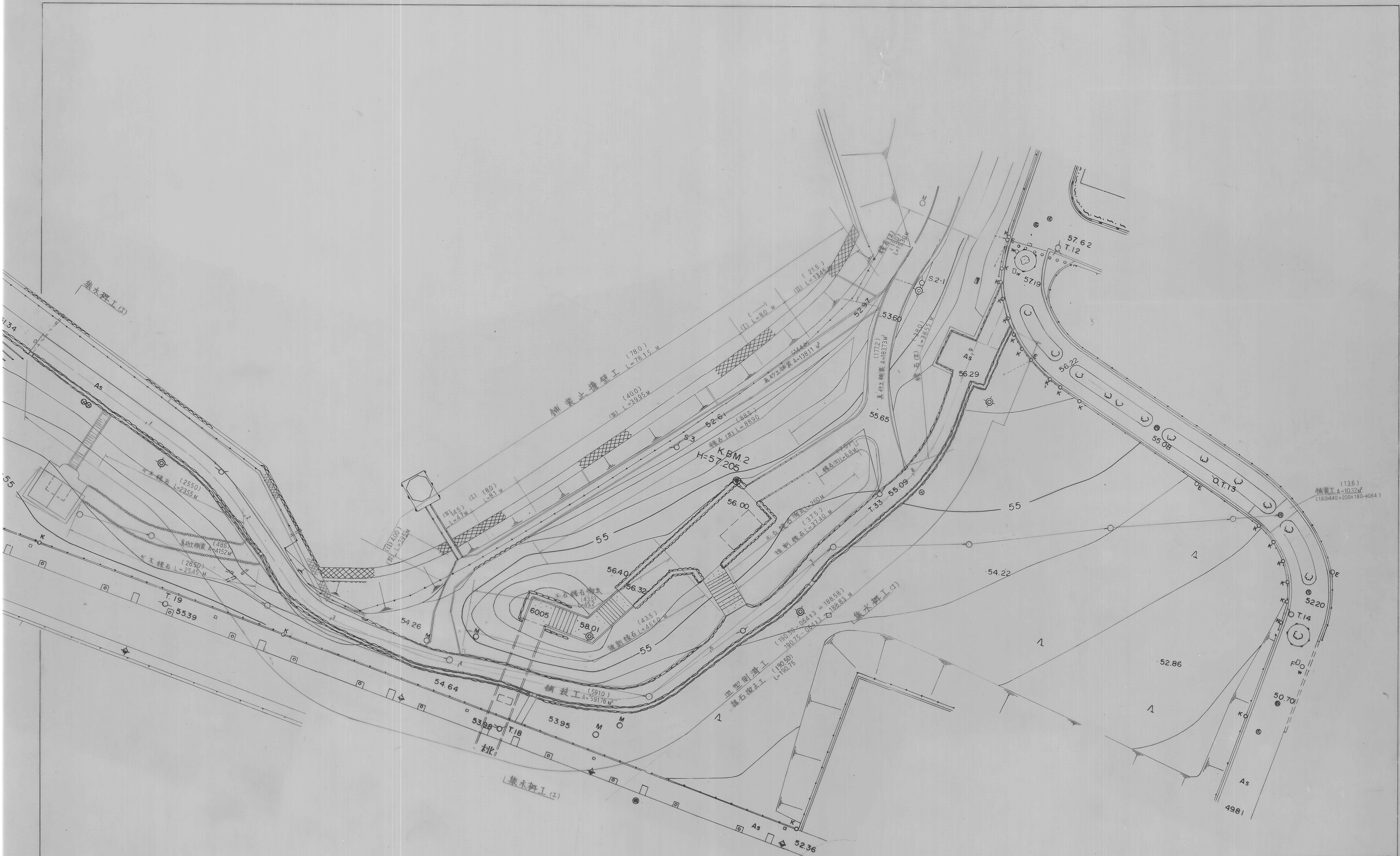
年度	元	図面番号
工事名	出来形図 (張芝真砂土舗装)	
図面名称		
縮尺		
吹田市緑化公園事務所建設課		

桃山公園平面図

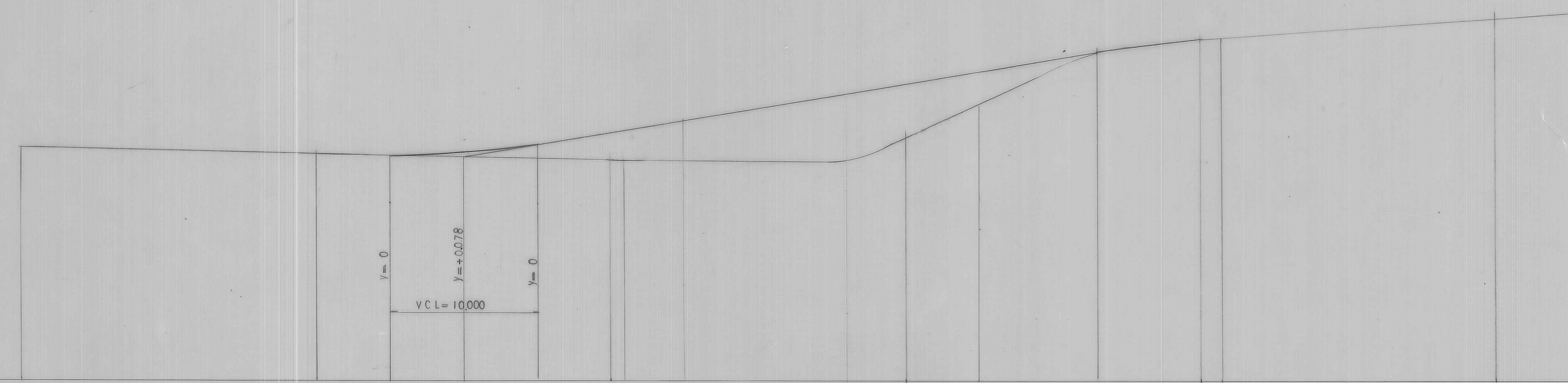
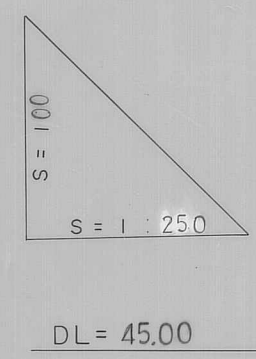
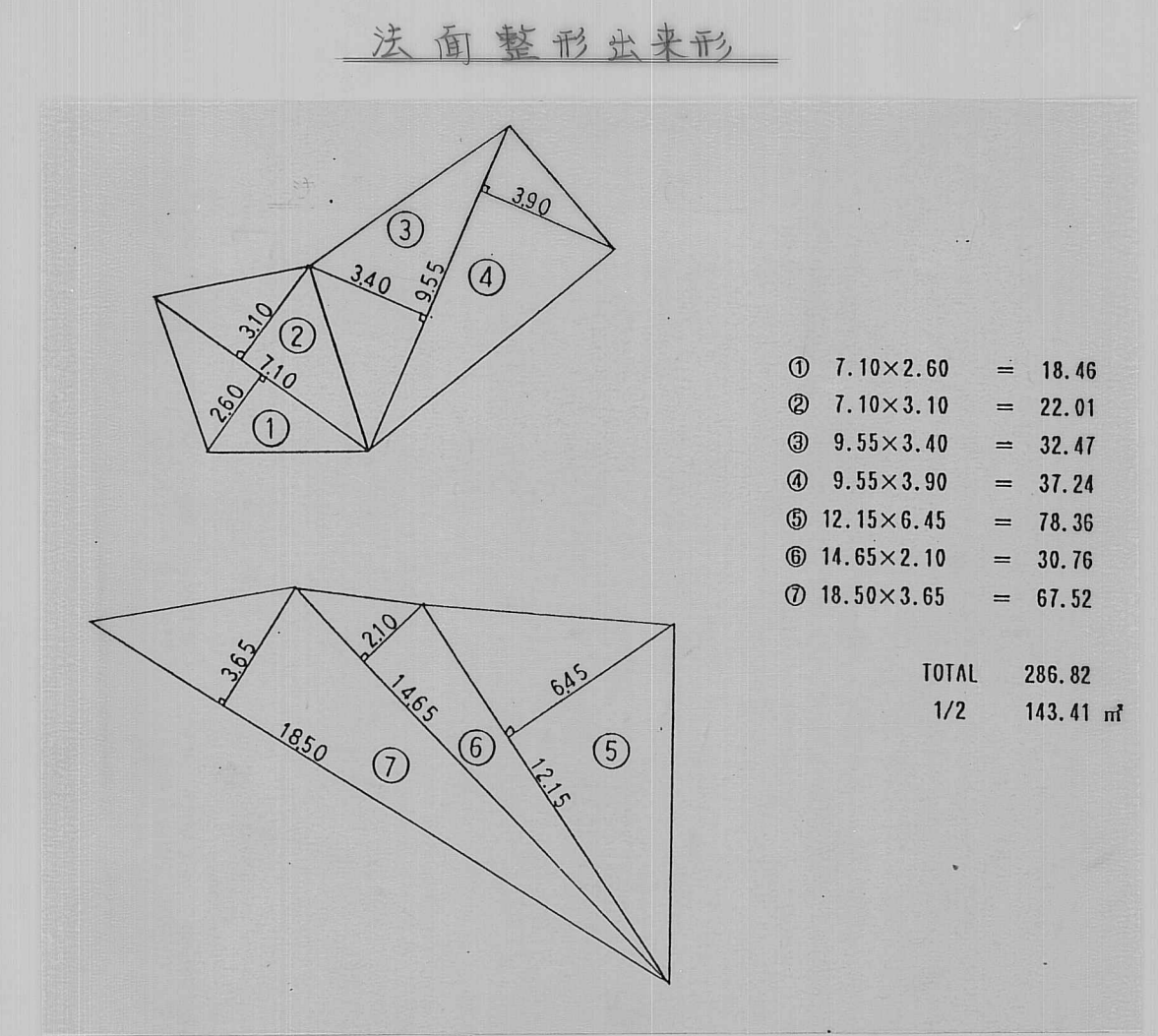
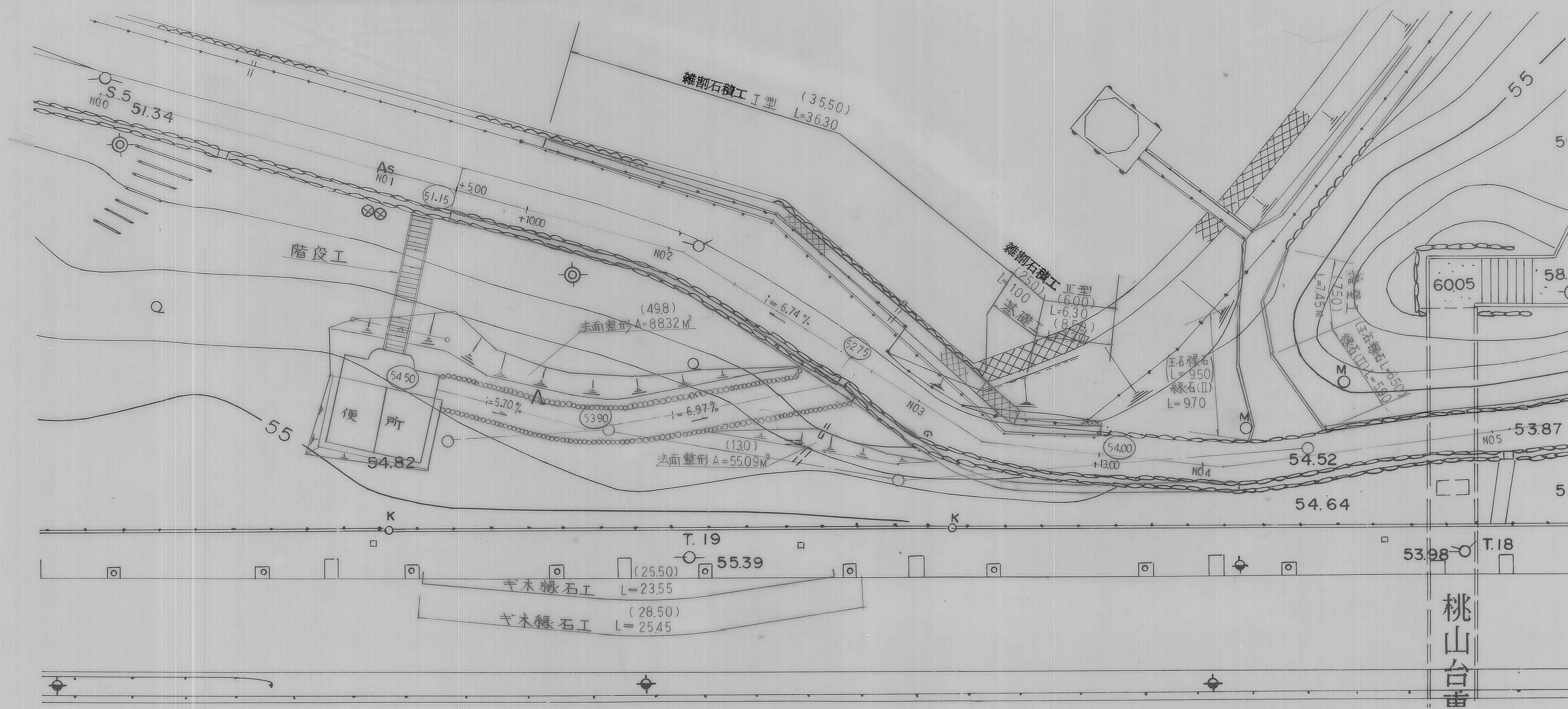
縮尺 1:500



年度	元	図面番号	1
公園名	桃山公園		
図の名称	池畔平面図 (改修前・排水・歩道)		
縮尺	S=1:500		
吹田市緑化公園事務所建設課			



年度	元	図面番号	2
公園名	桃山公園		
図面の名称	施設平面図 (舗装・築水柵・石敷)		
縮尺	1:250		
吹田市緑化公園事務所建設課			



勾配	i = 0.533% L = 30,000		i = 6.744% L = 43,000										
盛土	0.000	0.078	0.754	0.948	1.892	1.472	0.909	0.000					
切土													
計画高		51.153	51.178	51.437	51.374	51.841	51.948	52.852	53.122	53.455	54.000		
地盤高	51.34	51.18	51.10	51.437	51.02	51.00	51.00	50.96	51.65	52.55	54.00		
追加距離	0.00	20.00	25.00	30.00	35.00	40.00	41.00	45.00	56.00	60.00	65.00		
単距離	0.00	5.00	5.00	5.00	5.00	1.00	5.00	19.00	5.00	8.00	7.00		
測点	NO.0	NO.1	+5.00	+10.00	+15.00	NO.2 +100	+5.00	+16.00	NO.3	+5.00	+13.00	NO.4 +1.50	NO.5
線形													

年度	元	図面番号	3
公園名	桃山公園		
図面の名称	敷設計画: 平面, 縦断図 仮設平面: 石積, 機盤, 緑石		
縮尺	1:250		
吹田市緑化公園事務所建設課			