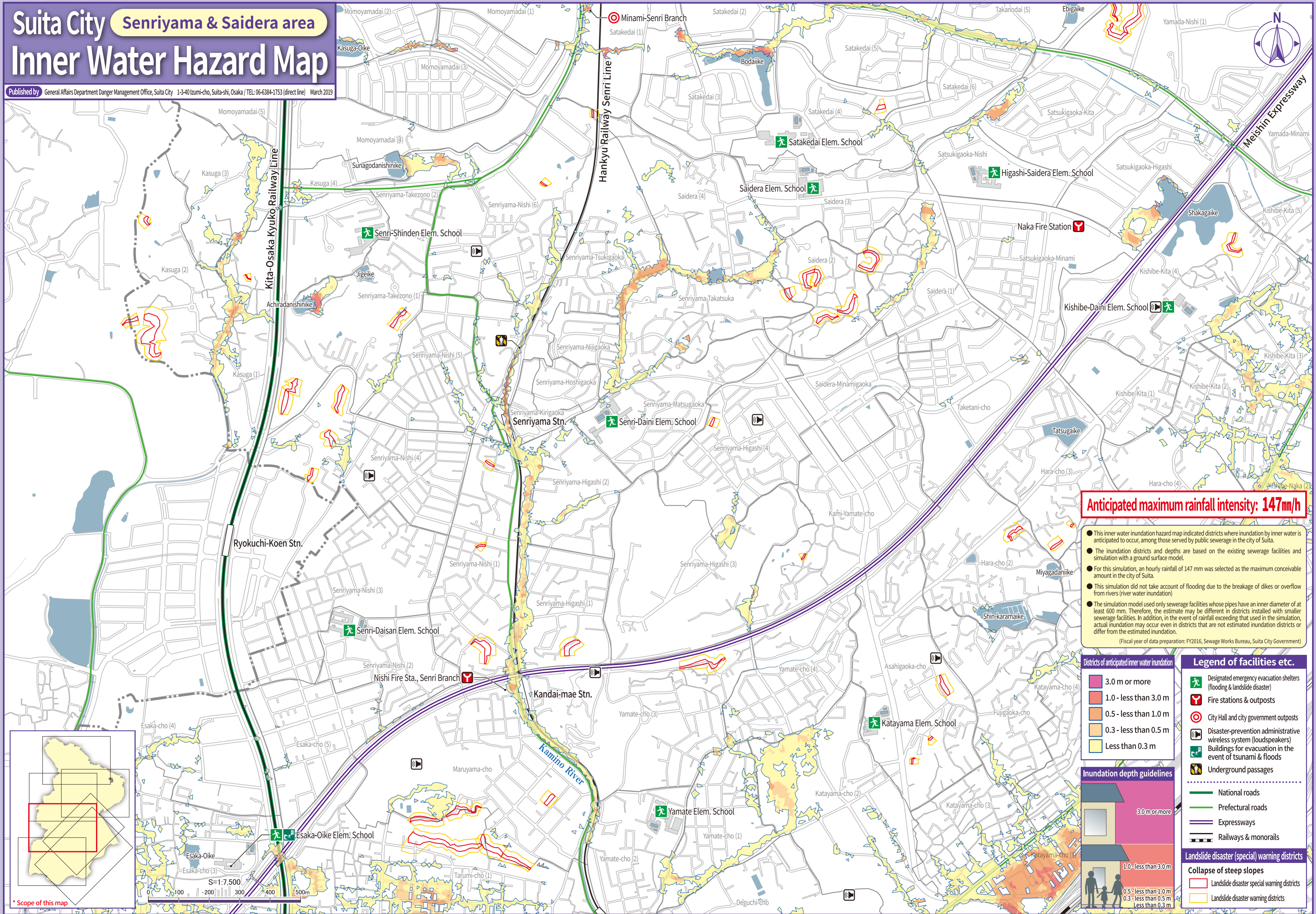


Suita City Senriyama & Saidera area Inner Water Hazard Map

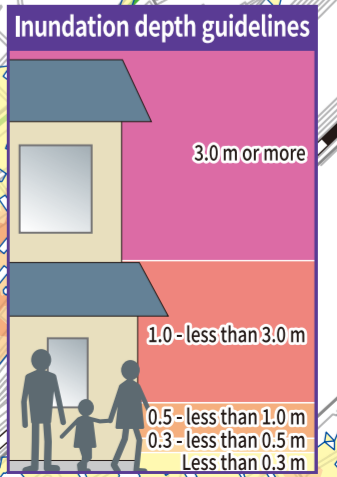
Published by General Affairs Department Danger Management Office, Suita City 1-3-40 Izumi-cho, Suita-shi, Osaka / TEL: 06-6384-1753 (direct line) March 2019



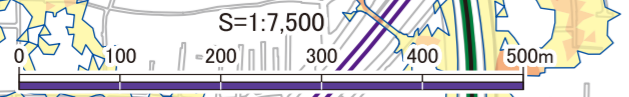
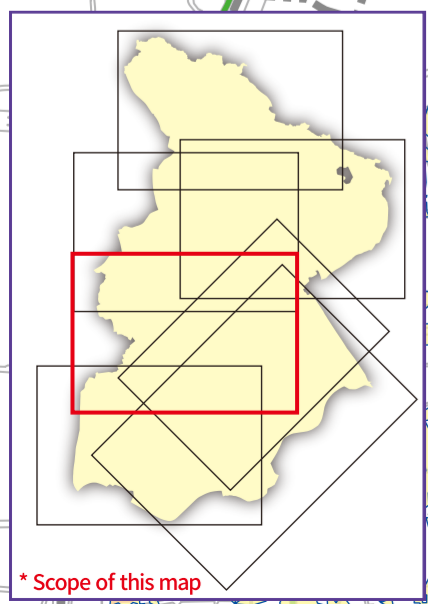
Anticipated maximum rainfall intensity: 147mm/h

- This inner water inundation hazard map indicated districts where inundation by inner water is anticipated to occur, among those served by public sewerage in the city of Suita.
 - The inundation districts and depths are based on the existing sewerage facilities and simulation with a ground surface model.
 - For this simulation, an hourly rainfall of 147 mm was selected as the maximum conceivable amount in the city of Suita.
 - This simulation did not take account of flooding due to the breakage of dikes or overflow from rivers (river water inundation).
 - The simulation model used only sewerage facilities whose pipes have an inner diameter of at least 600 mm. Therefore, the estimate may be different in districts installed with smaller sewerage facilities. In addition, in the event of rainfall exceeding that used in the simulation, actual inundation may occur even in districts that are not estimated inundation districts or differ from the estimated inundation.
- (Fiscal year of data preparation: FY2016, Sewage Works Bureau, Suita City Government)

- Districts of anticipated inner water inundation**
- 3.0 m or more
 - 1.0 - less than 3.0 m
 - 0.5 - less than 1.0 m
 - 0.3 - less than 0.5 m
 - Less than 0.3 m



- Legend of facilities etc.**
- Designated emergency evacuation shelters (flooding & landslide disaster)
 - Fire stations & outposts
 - City Hall and city government outposts
 - Disaster-prevention administrative wireless system (loudspeakers)
 - Buildings for evacuation in the event of tsunami & floods
 - Underground passages
 - National roads
 - Prefectural roads
 - Expressways
 - Railways & monorails
- Landslide disaster (special) warning districts**
- Collapse of steep slopes**
 - Landslide disaster special warning districts
 - Landslide disaster warning districts



This map was prepared by reproducing a topographical map on a scale of 1/2,500 and making the necessary modifications, with the approval of the mayors of the cities of Osaka, Toyonaka, Ibaraki, and Minoo. (Approval numbers: "大計第128号", "豊総第1832号", "平30第2331号", and "箕政第112号の2").